



# Project Organisation 1

Peter J. A. Reusch

## TOC

1. Some pictures to explain issues of project organization with respect to size, complexity, and duration
2. Project Organization according to PMBOK
3. Project Organization in SME companies



Result of a project





**Power station - Neurath**

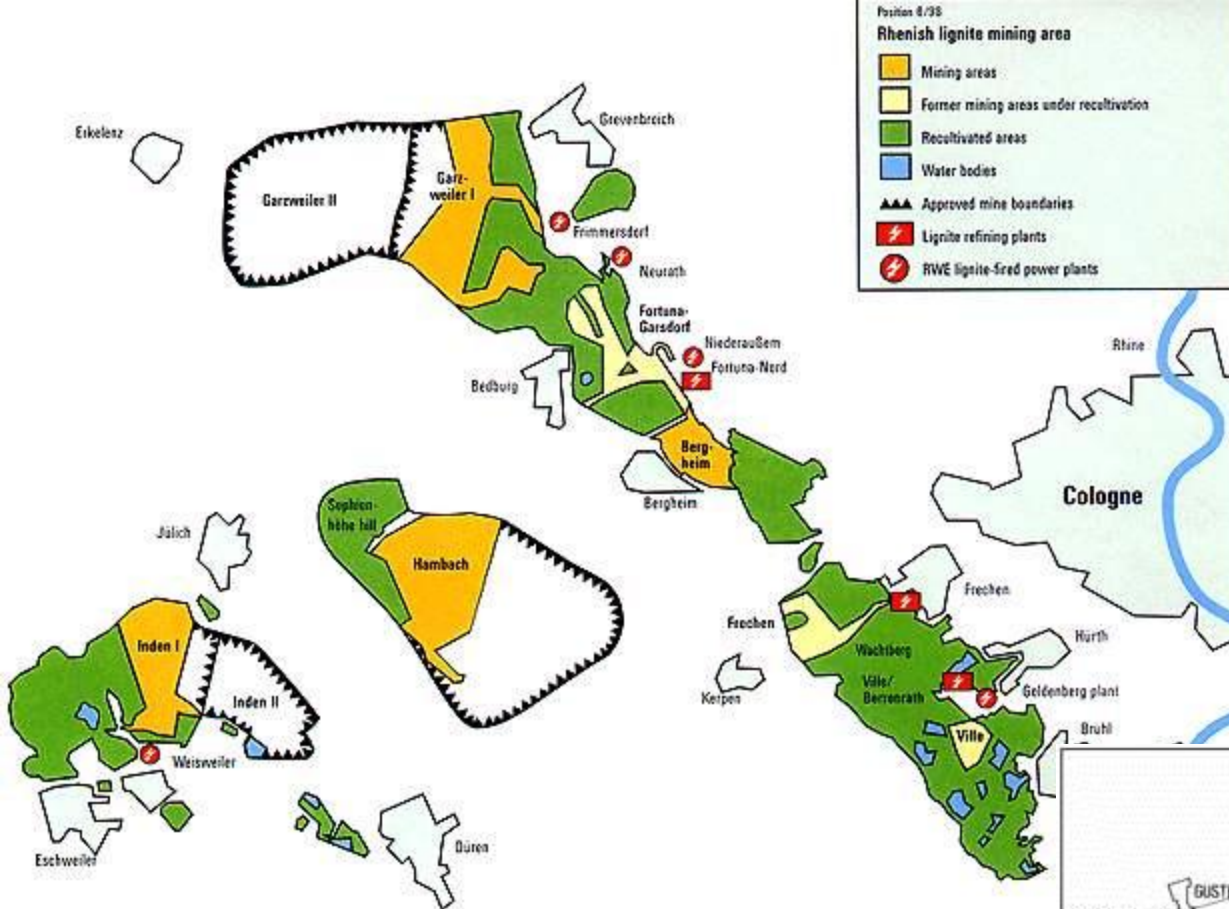


**Coal Mine - Garzweiler I**

Result of a project



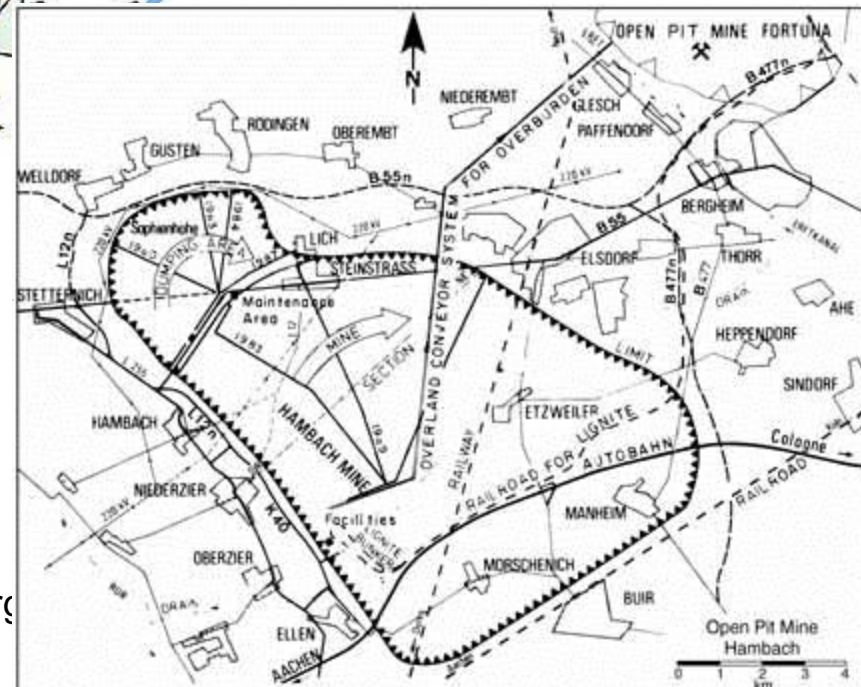




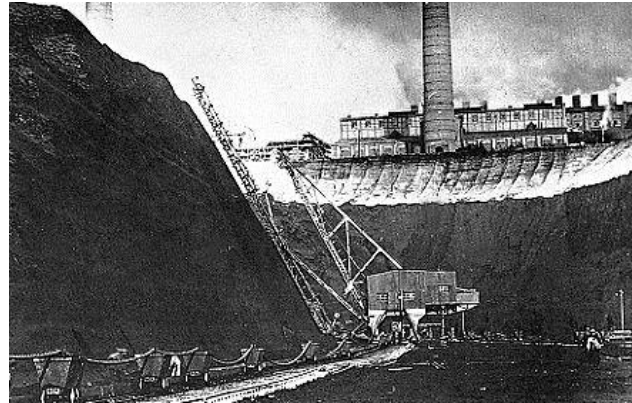
Result of projects

**Brown Coal Field in Germany**

**- Close to Cologne**



EuroMPM Project Org



## Coal mine and Recultivation



**Heider Bergsee Brühl**

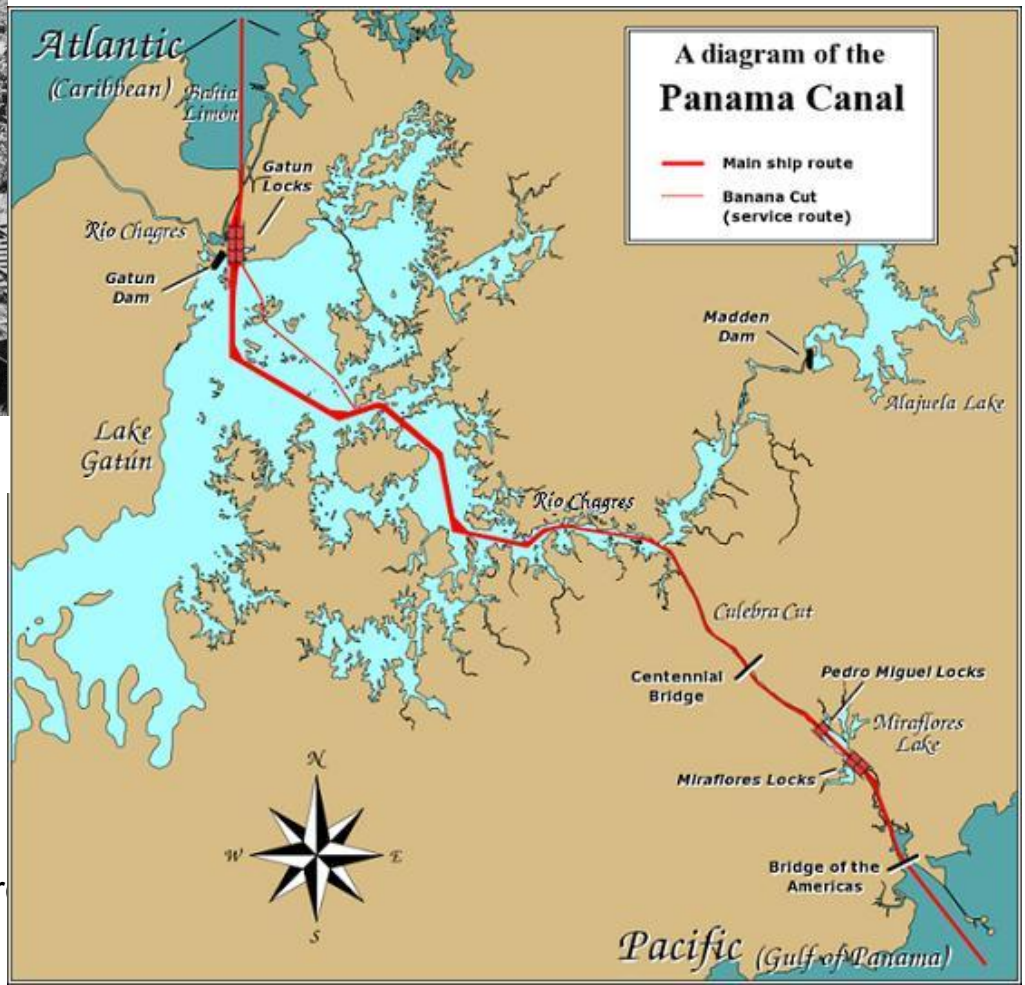
Result of a project





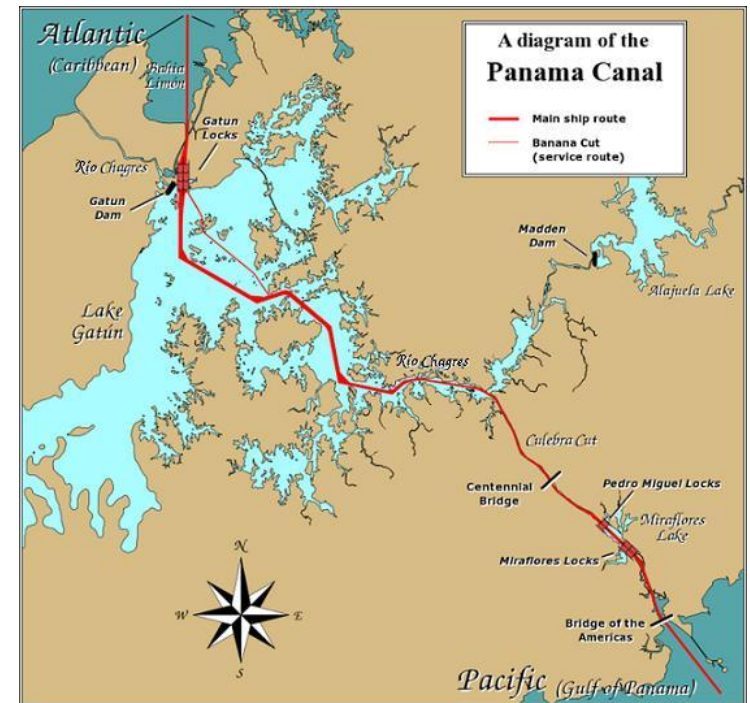


Result of a project





Result of a project







Result of a project

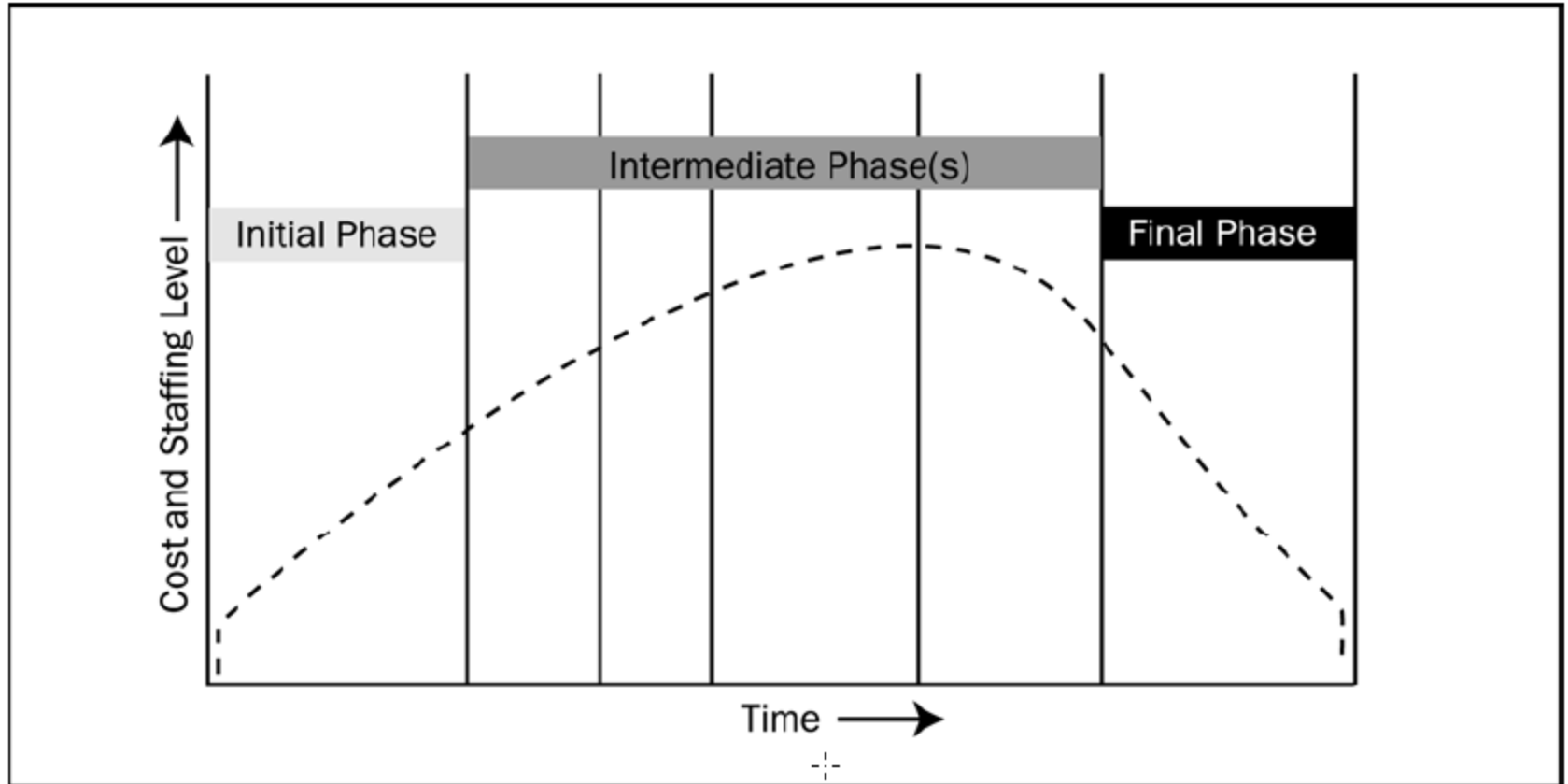




*A Guide to the*  
***Project Management***  
***Body of Knowledge***  
*Third Edition*

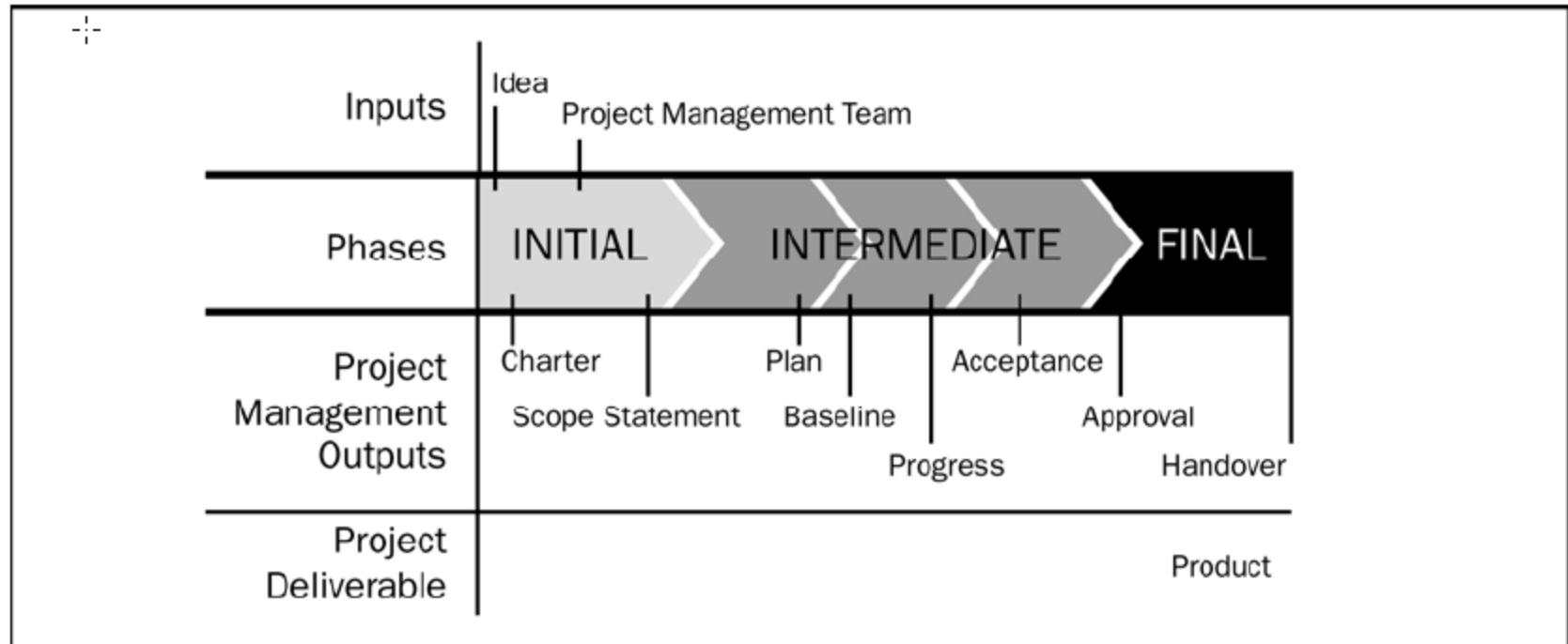
---

*(PMBOK<sup>®</sup> Guide)*

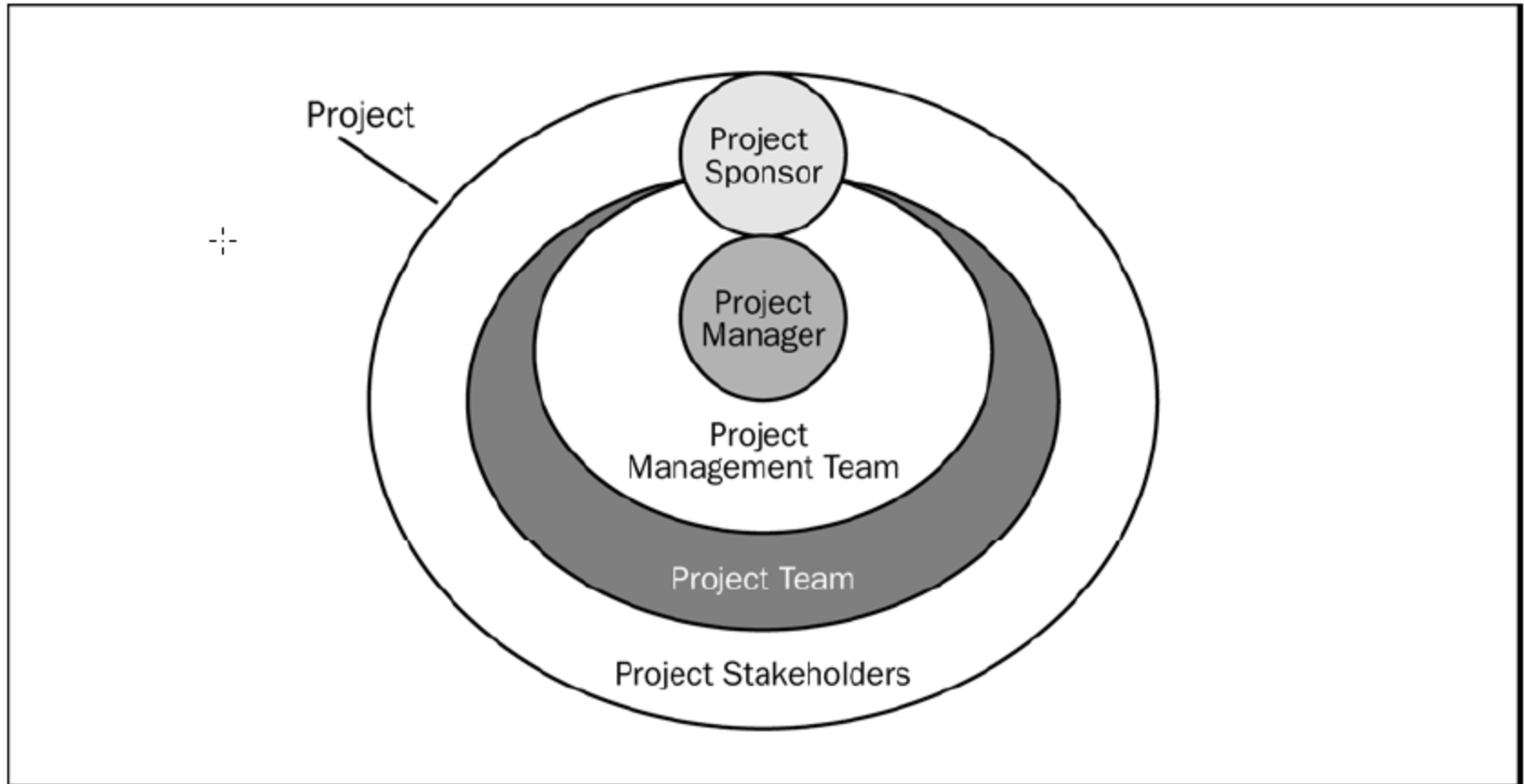


**Figure 2-1. Typical Project Cost and Staffing Level Across the Project Life Cycle**

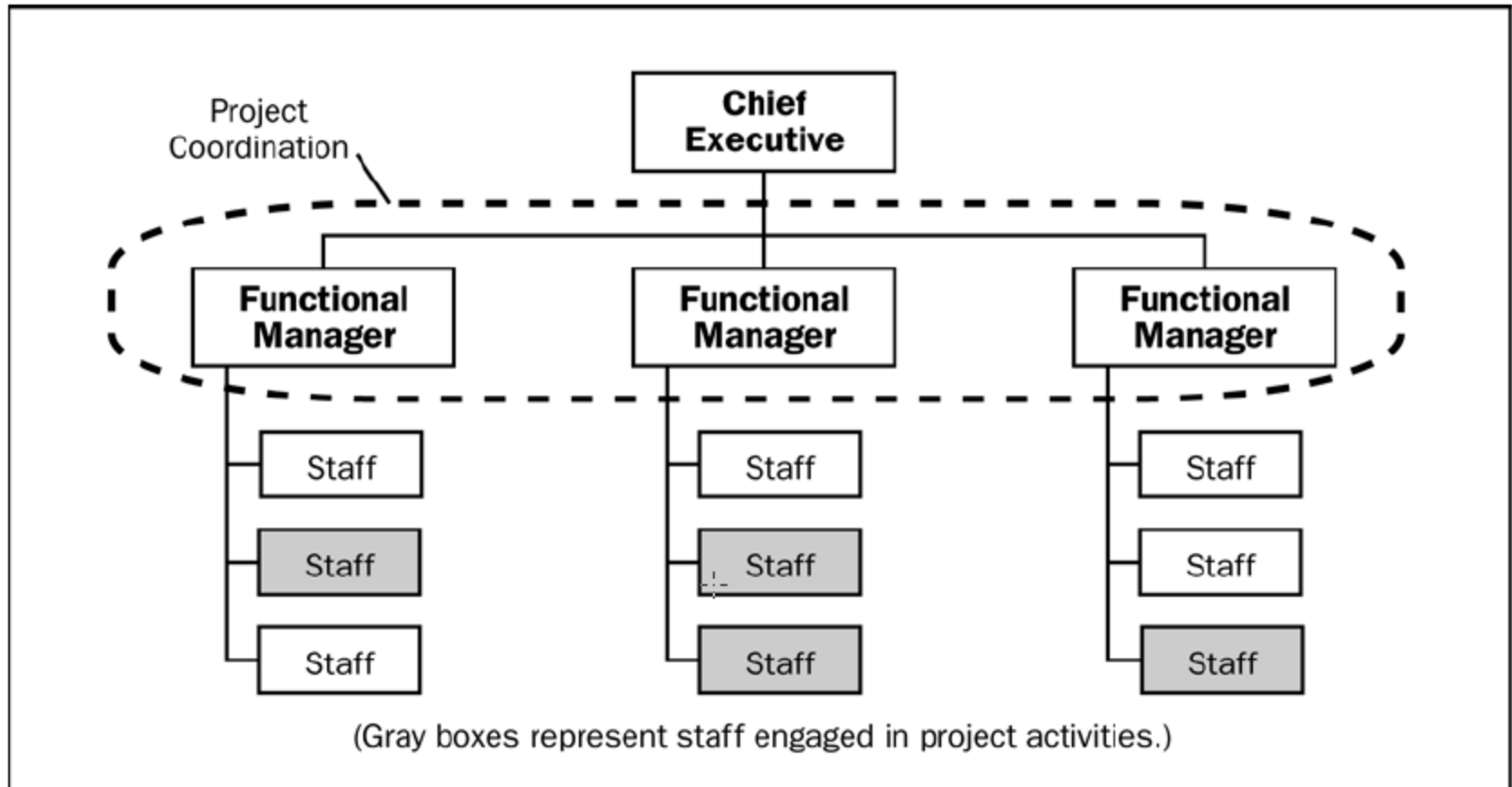




**Figure 2-3. Typical Sequence of Phases in a Project Life Cycle**

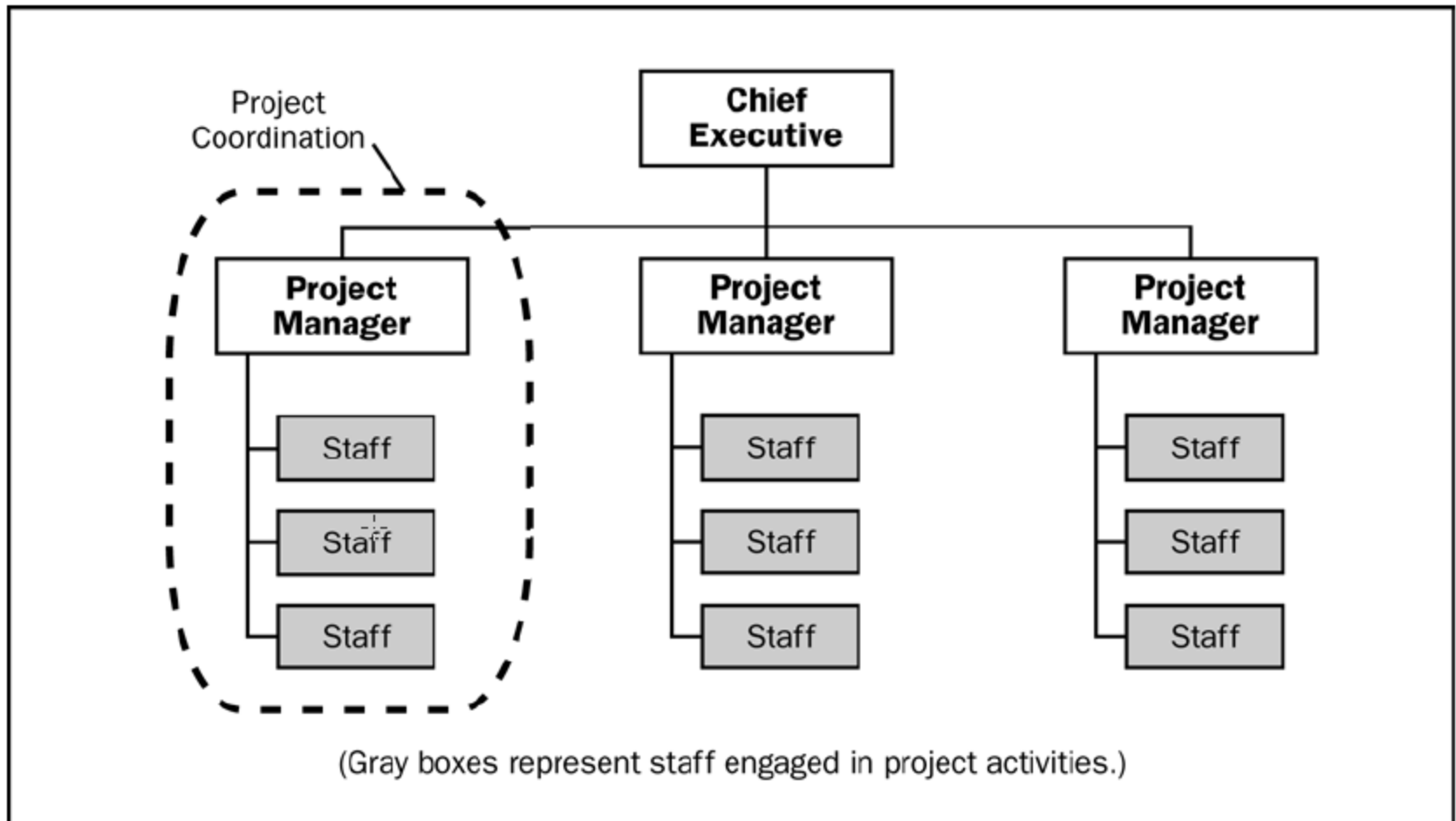


**Figure 2-5. The Relationship Between Stakeholders and the Project**

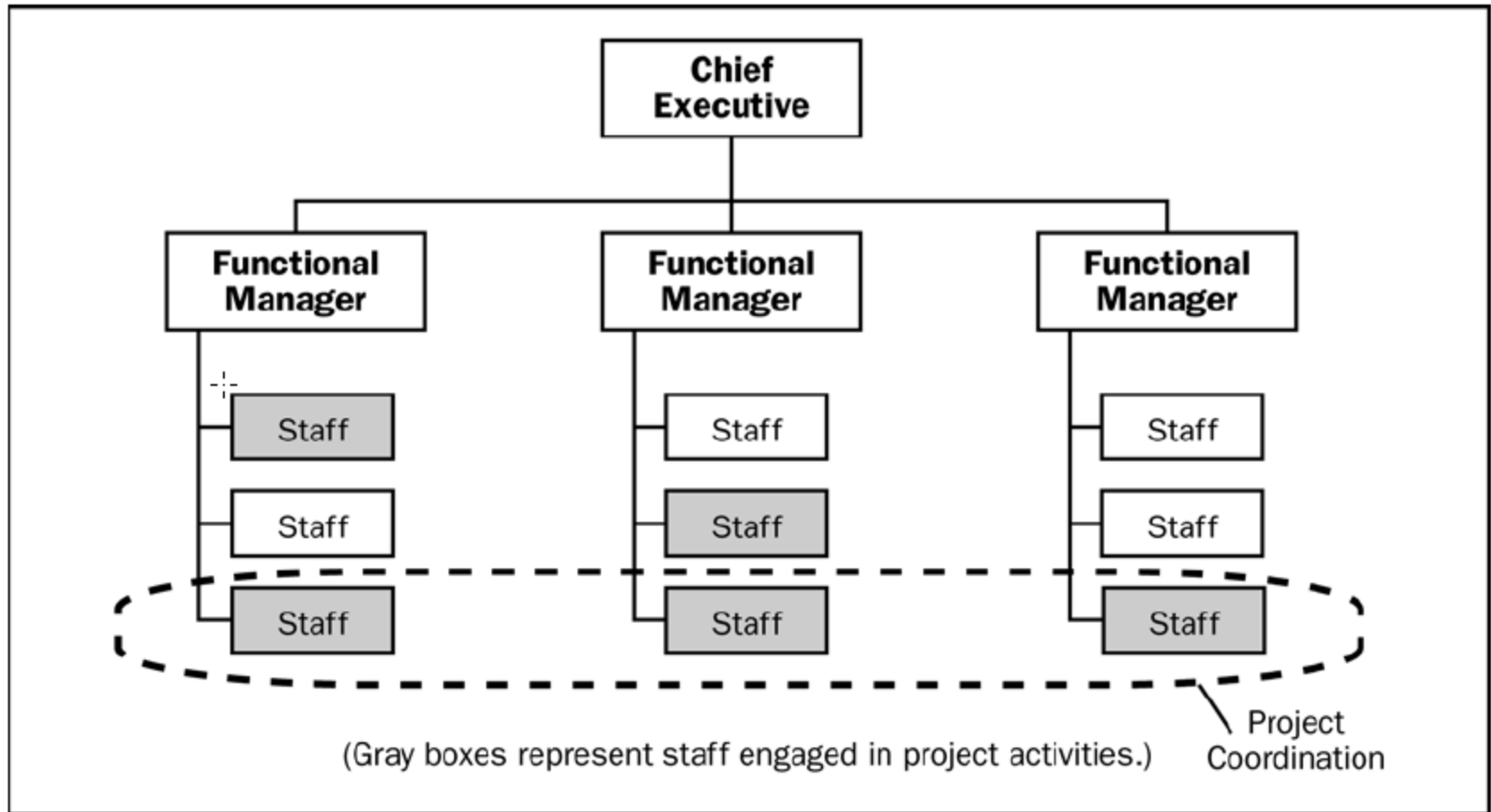


**Figure 2-7. Functional Organization**

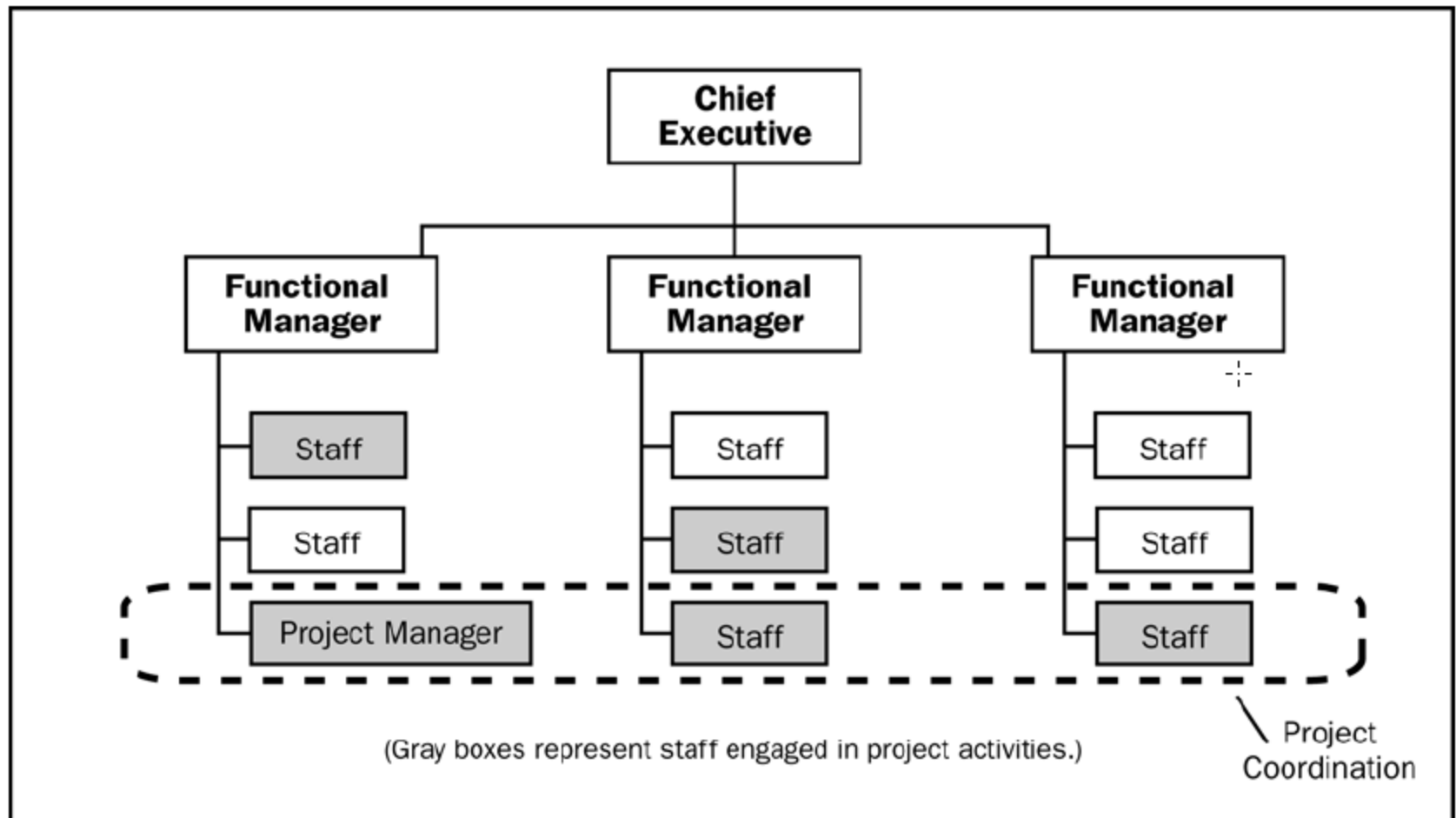




**Figure 2-8. Projectized Organization**

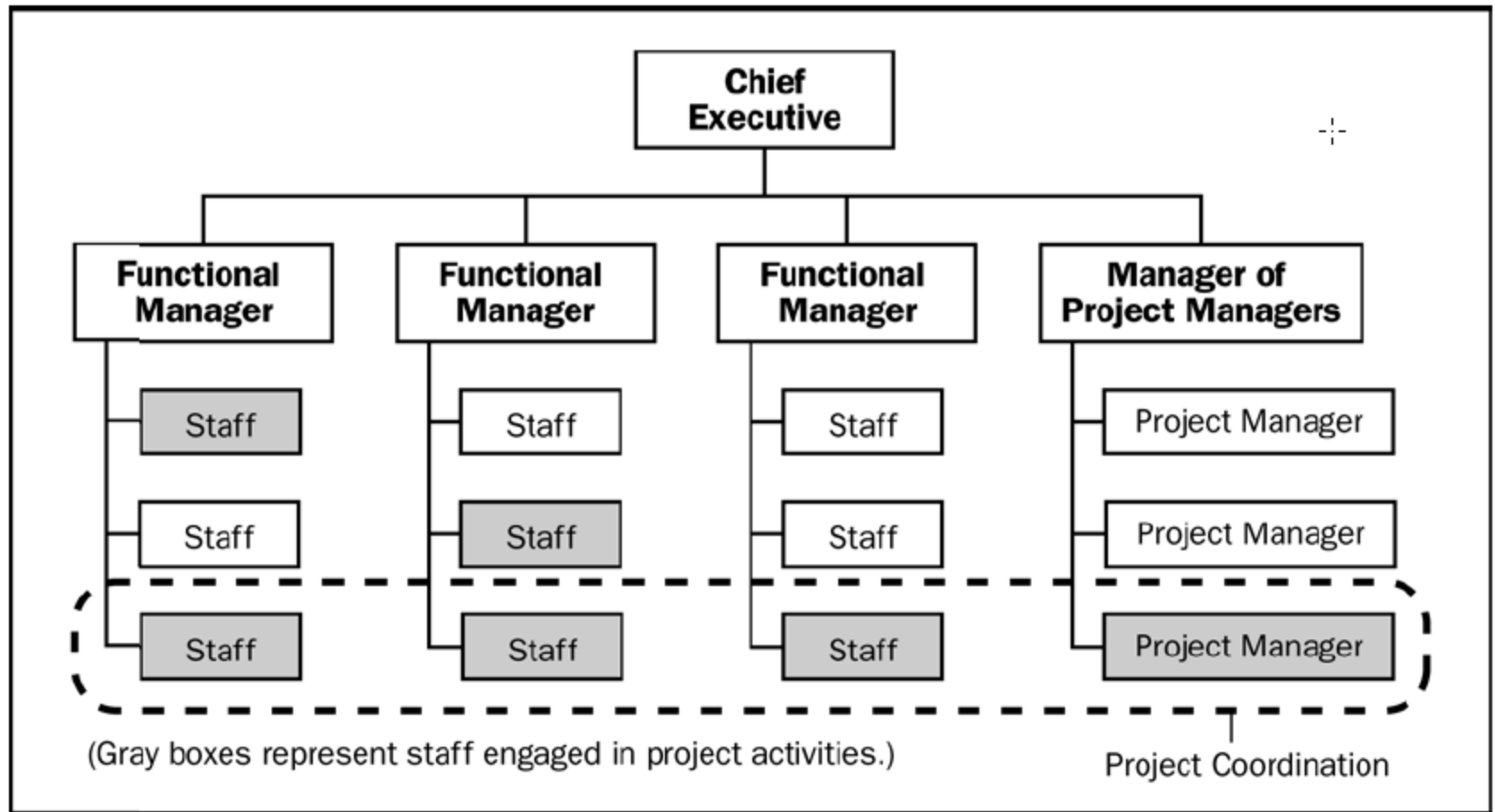


**Figure 2-9. Weak Matrix Organization**

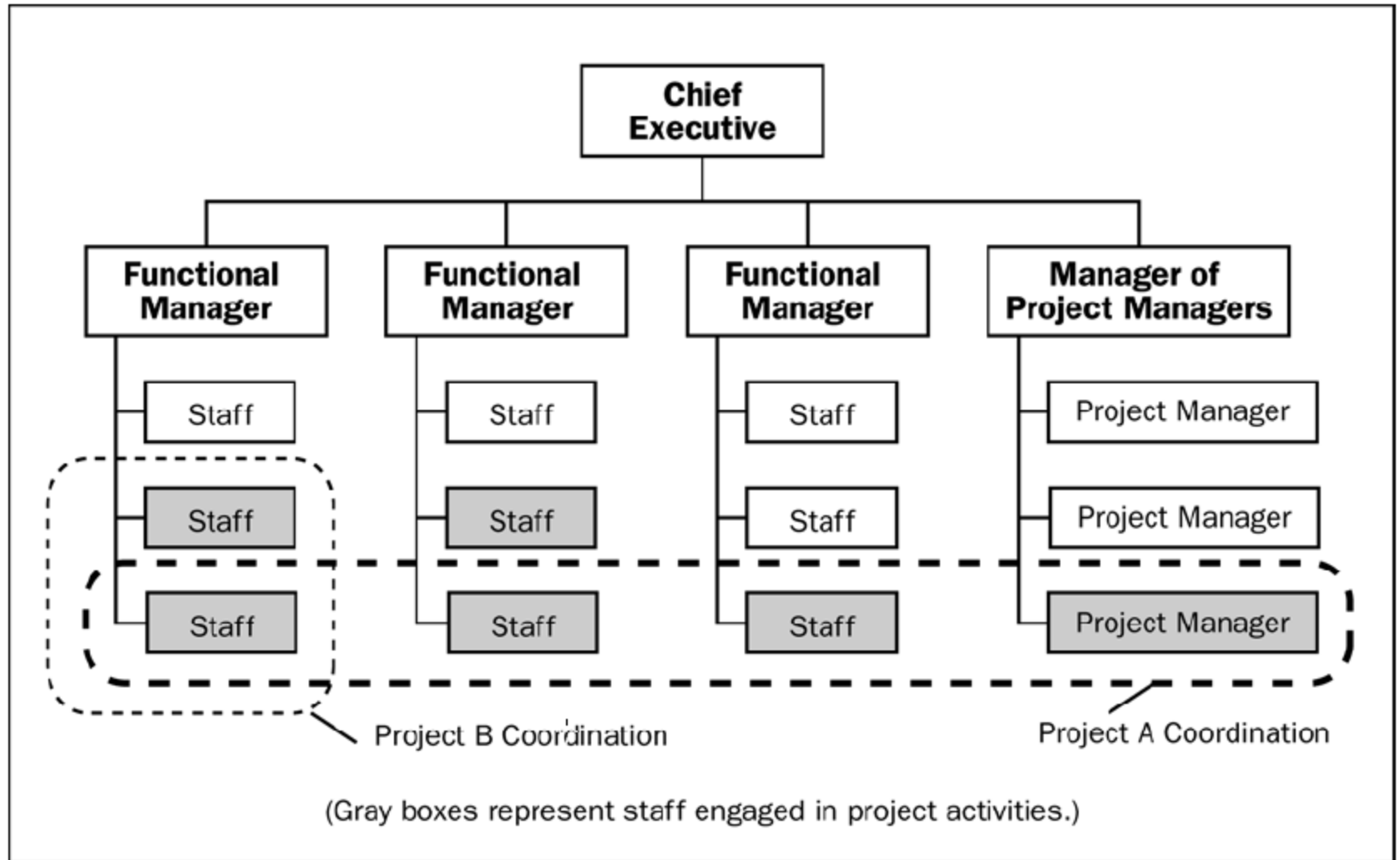


**Figure 2-10. Balanced Matrix Organization**





**Figure 2-11. Strong Matrix Organization**



**Figure 2-12. Composite Organization**

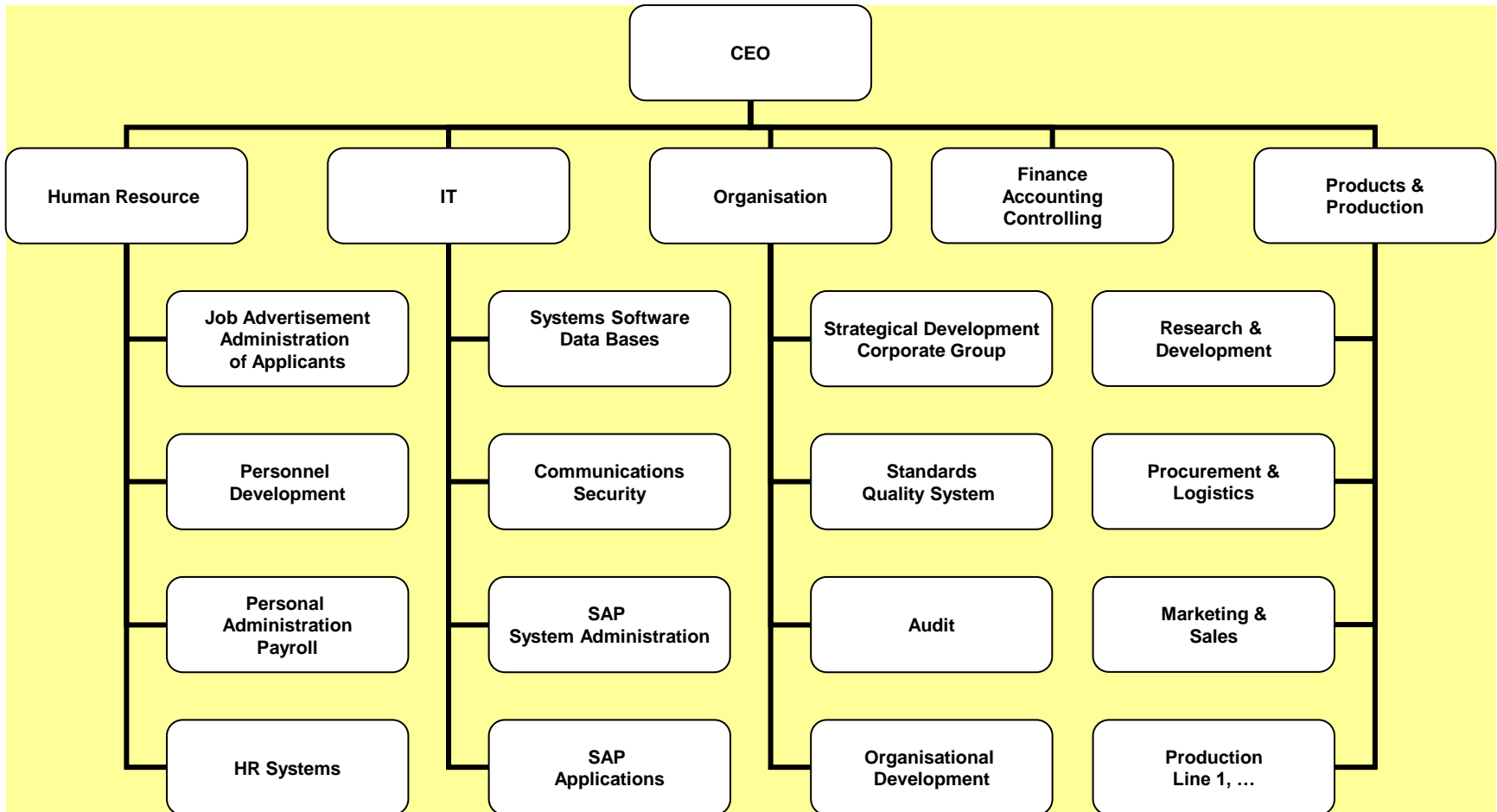


<b>Organization Structure</b> <b>Project Characteristics</b>	<b>Functional</b>	<b>Matrix</b>			<b>Projectized</b>
		<b>Weak Matrix</b>	<b>Balanced Matrix</b>	<b>Strong Matrix</b>	
Project Manager's Authority	Little or None	Limited	Low to Moderate	Moderate to High	High to Almost Total
Resource Availability	Little or None	Limited	Low to Moderate	Moderate to High	High to Almost Total
Who controls the project budget	Functional Manager	Functional Manager	Mixed	Project Manager	Project Manager
Project Manager's Role	Part-time	Part-time	Full-time	Full-time	Full-time
Project Management Administrative Staff	Part-time	Part-time	Part-time	Full-time	Full-time

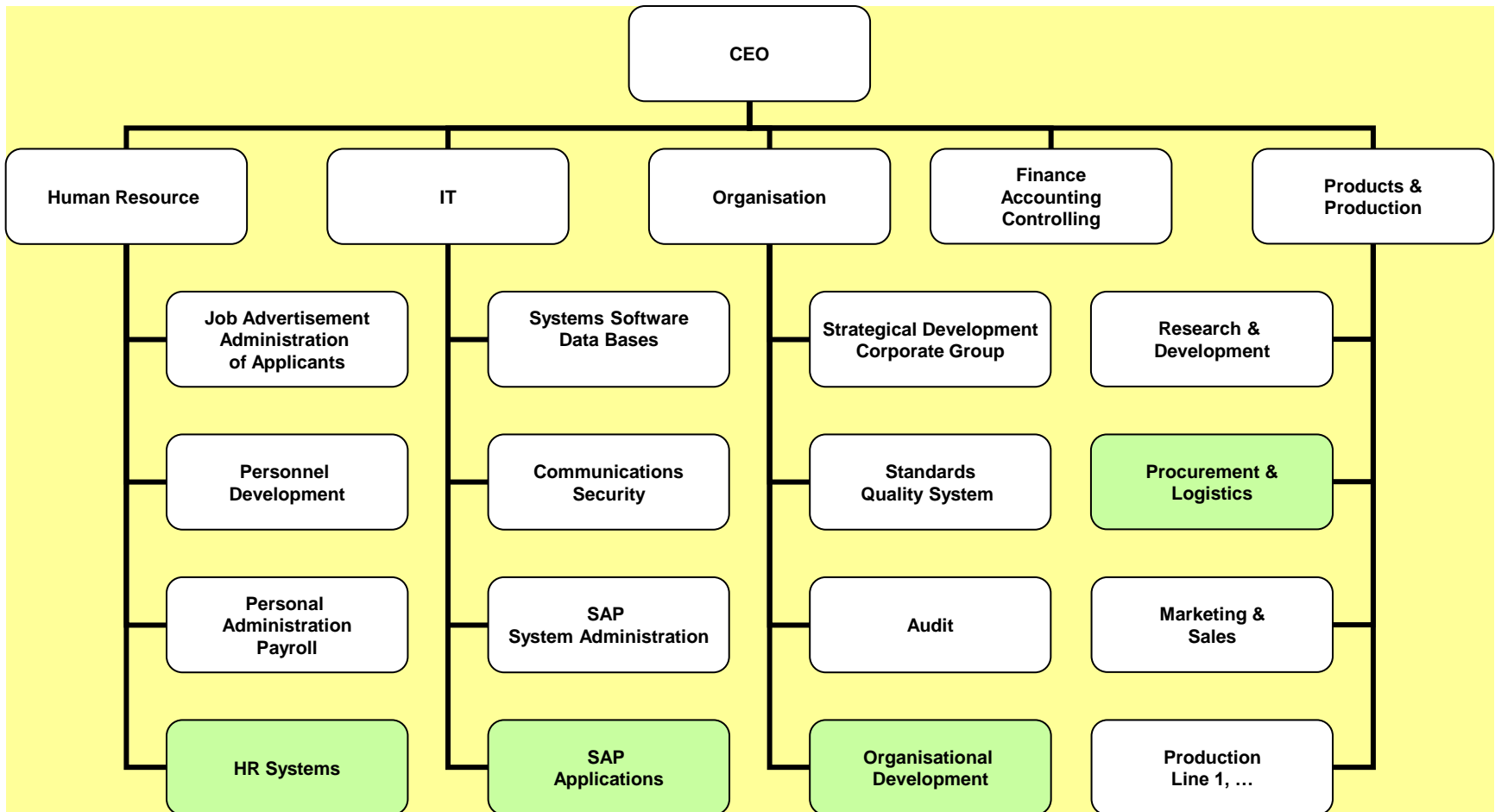
**Figure 2-6. Organizational Structure Influences on Projects**



# Company ABC

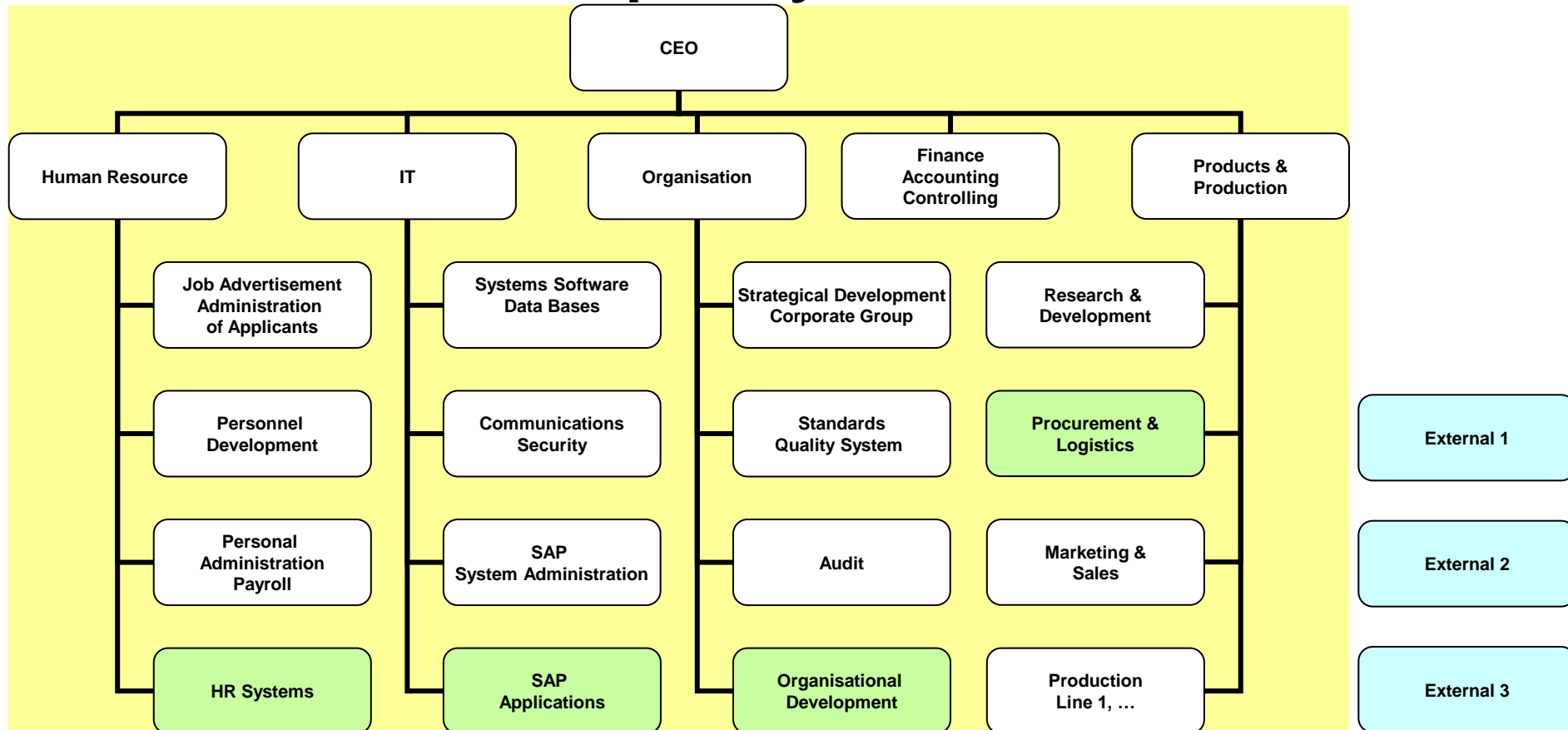


# Company ABC



Core crew for the implementation of SAP HR Applications

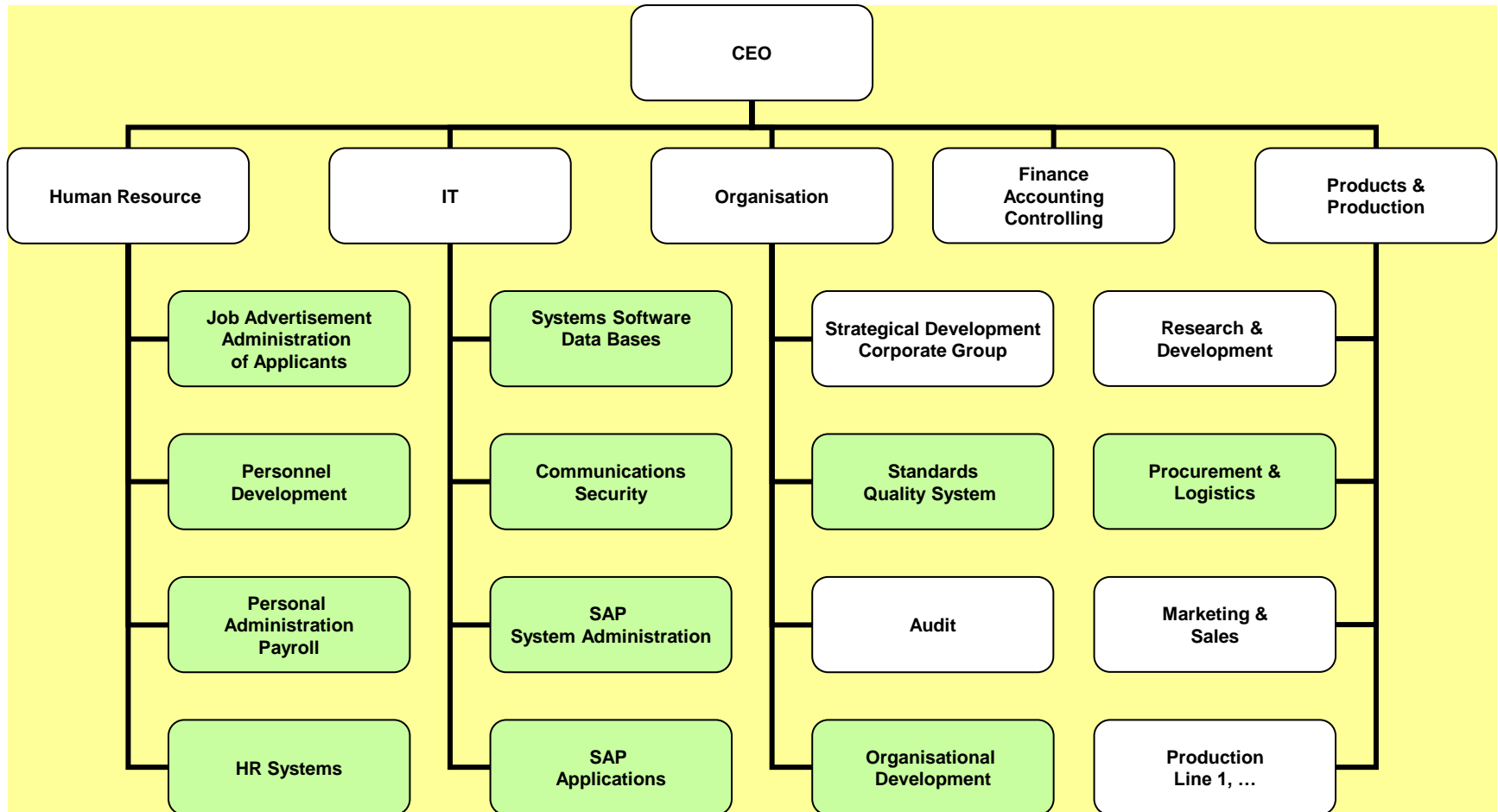
# Company ABC



Core crew for the implementation of SAP HR Applications

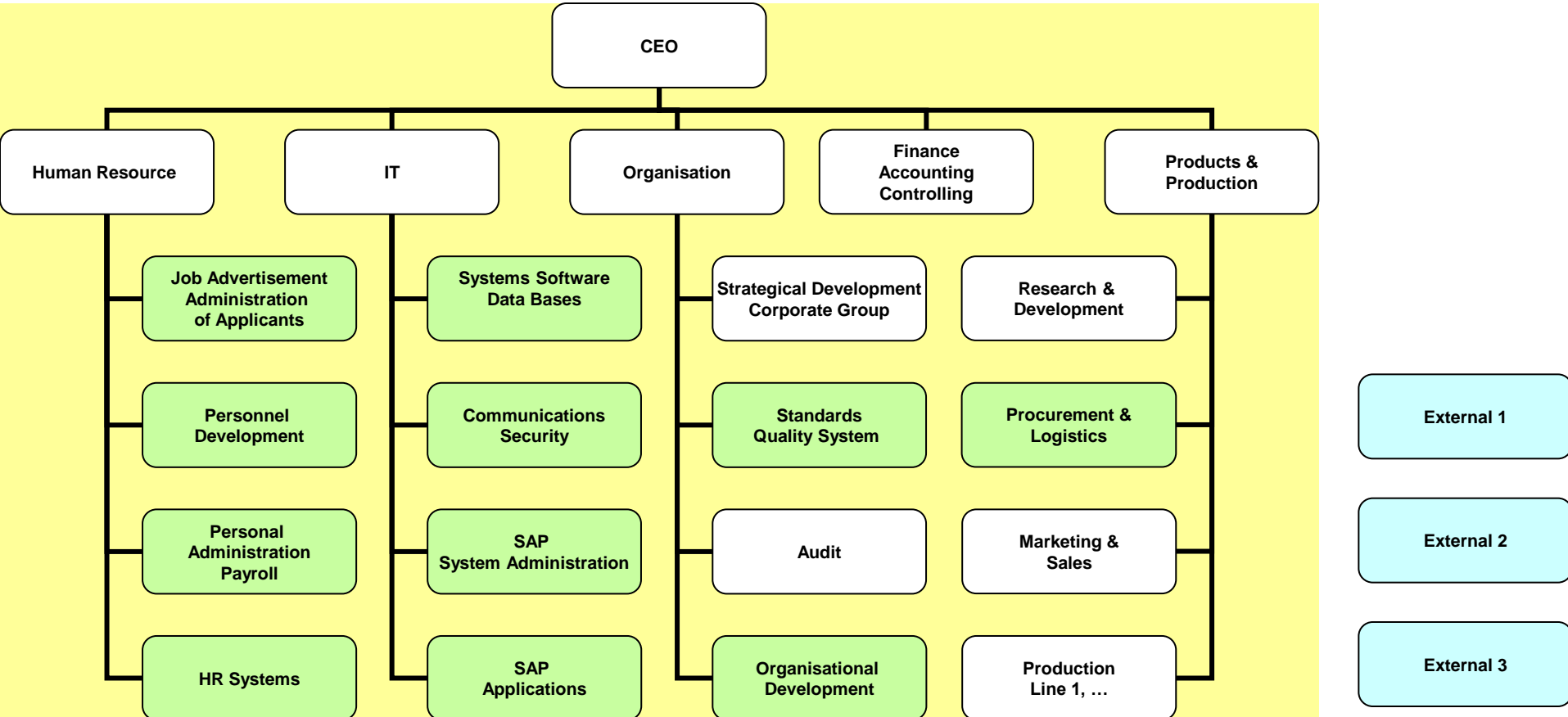


# Company ABC



Extended crew for the implementation of SAP HR Applications

# Company ABC

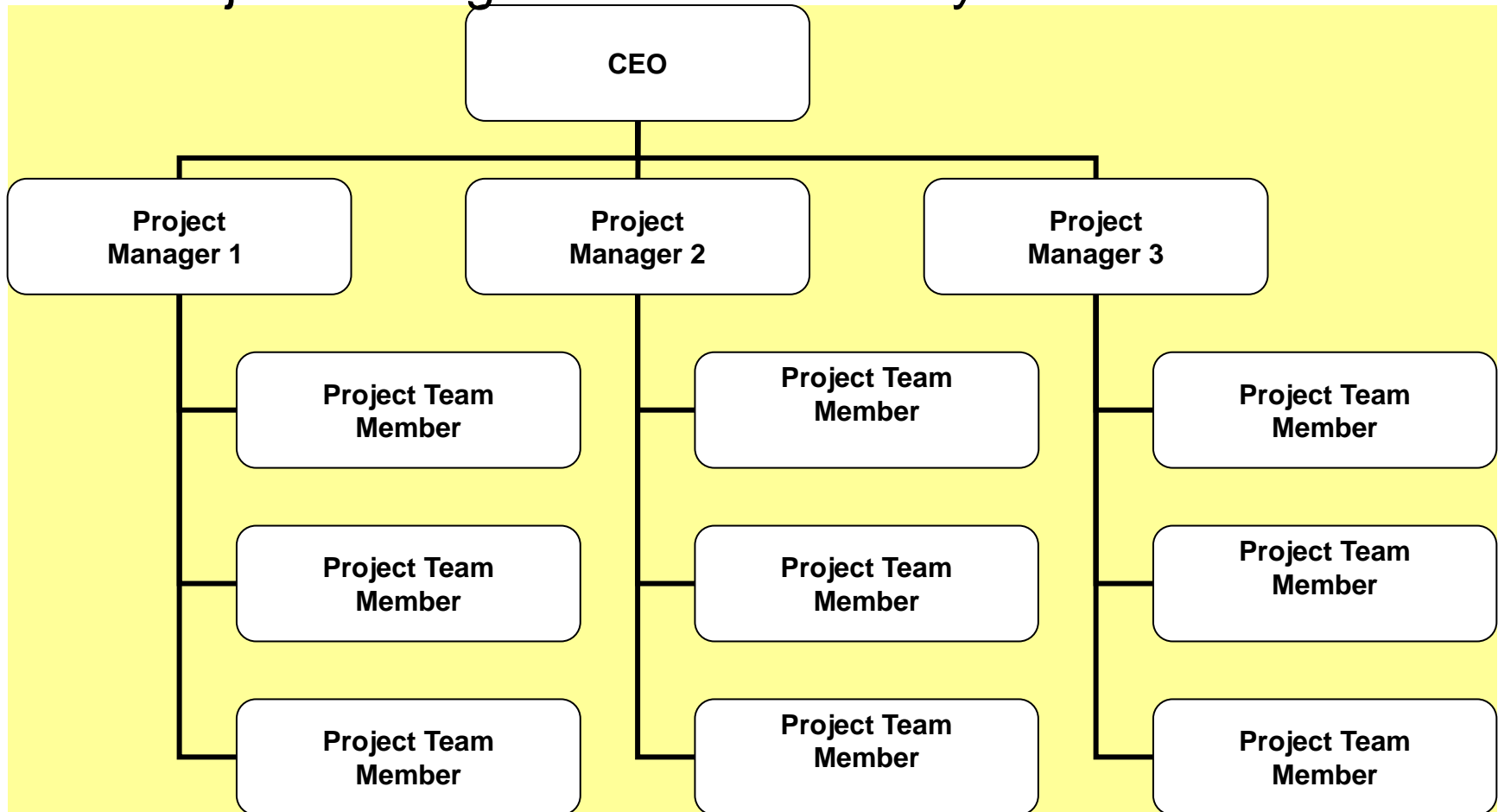


Extended crew for the implementation of SAP HR Applications



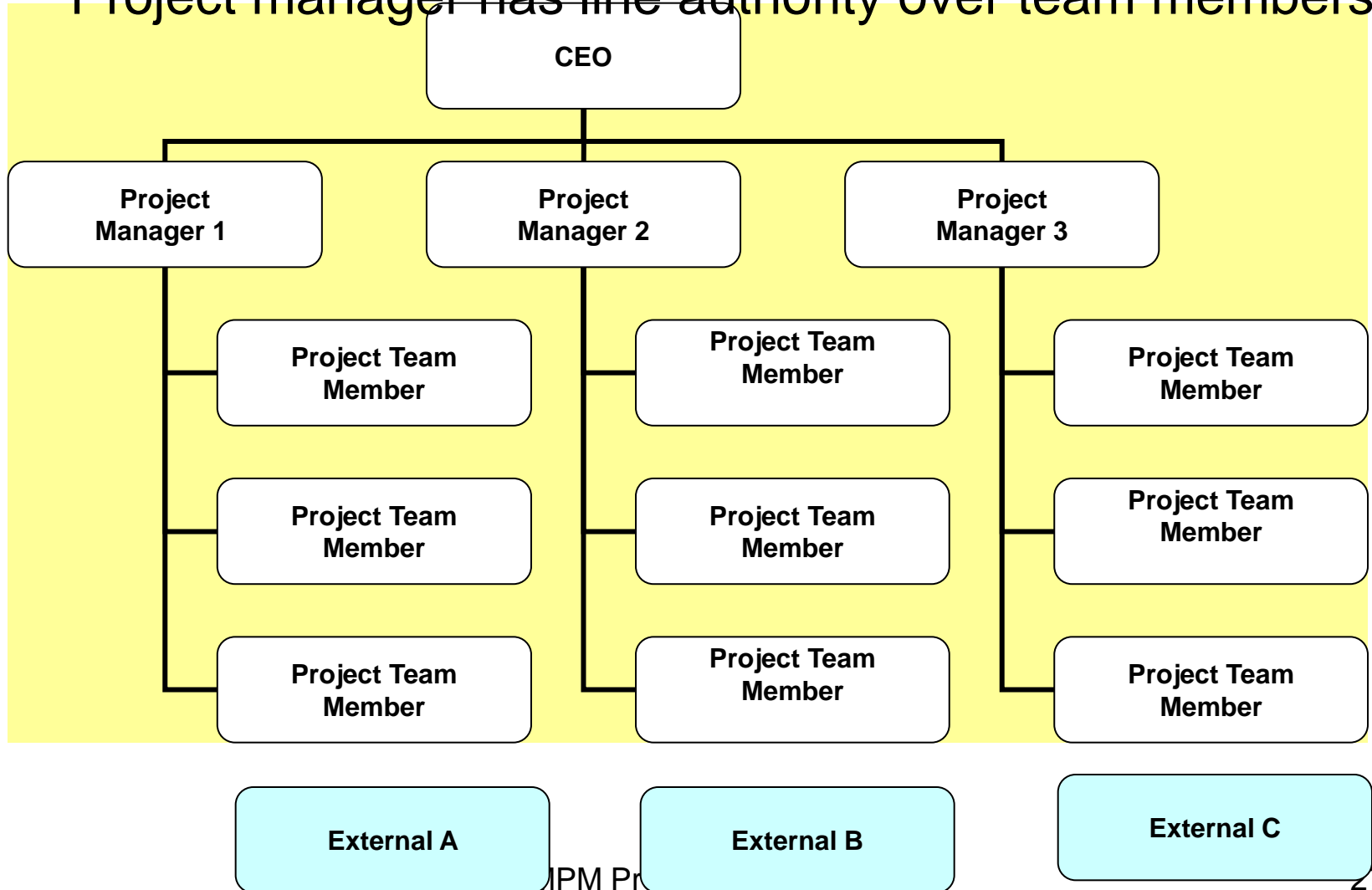
# Projectized Company Structure

Project manager has line authority over team members

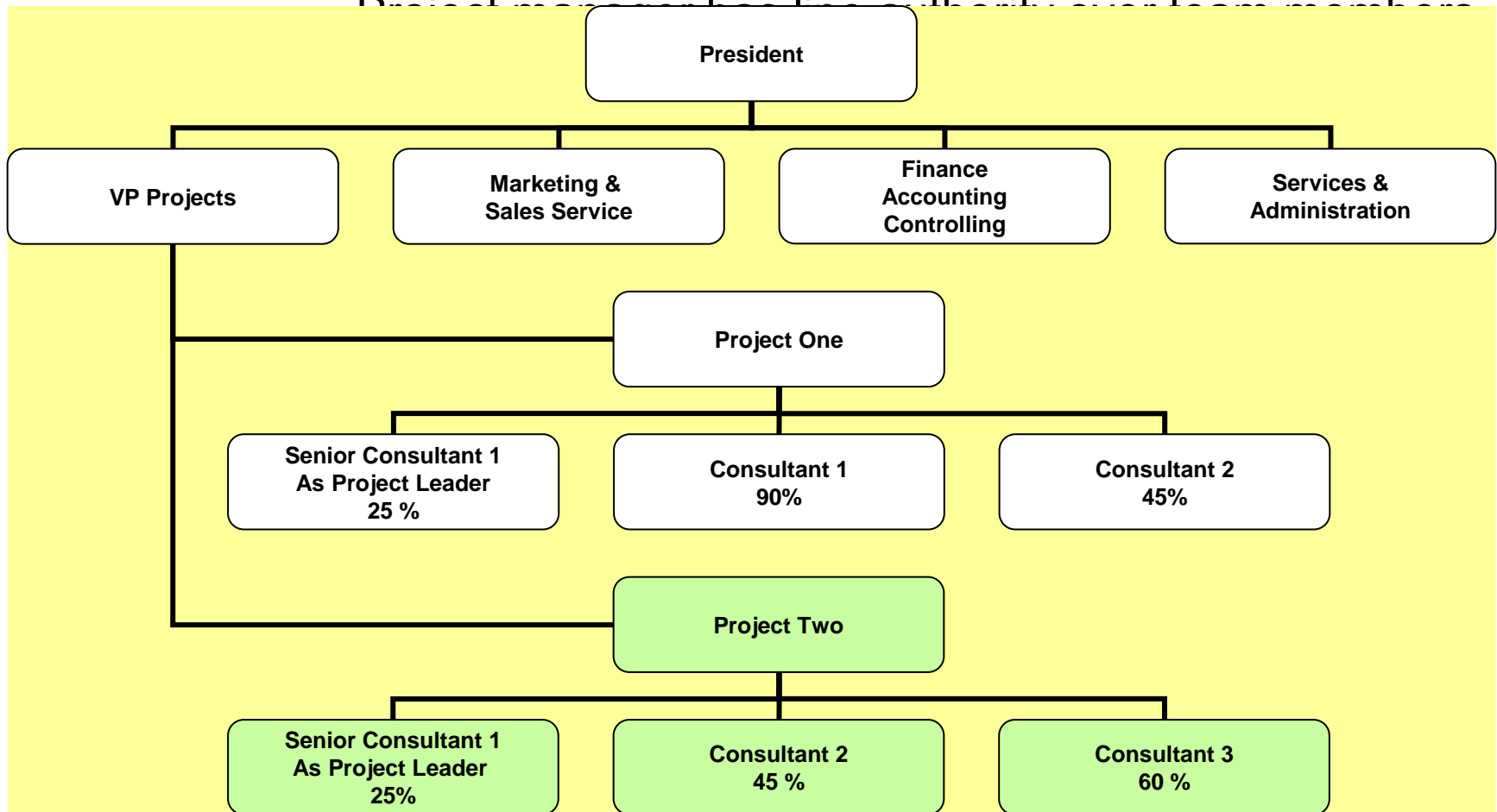


# Projectized Company Structure

Project manager has line authority over team members

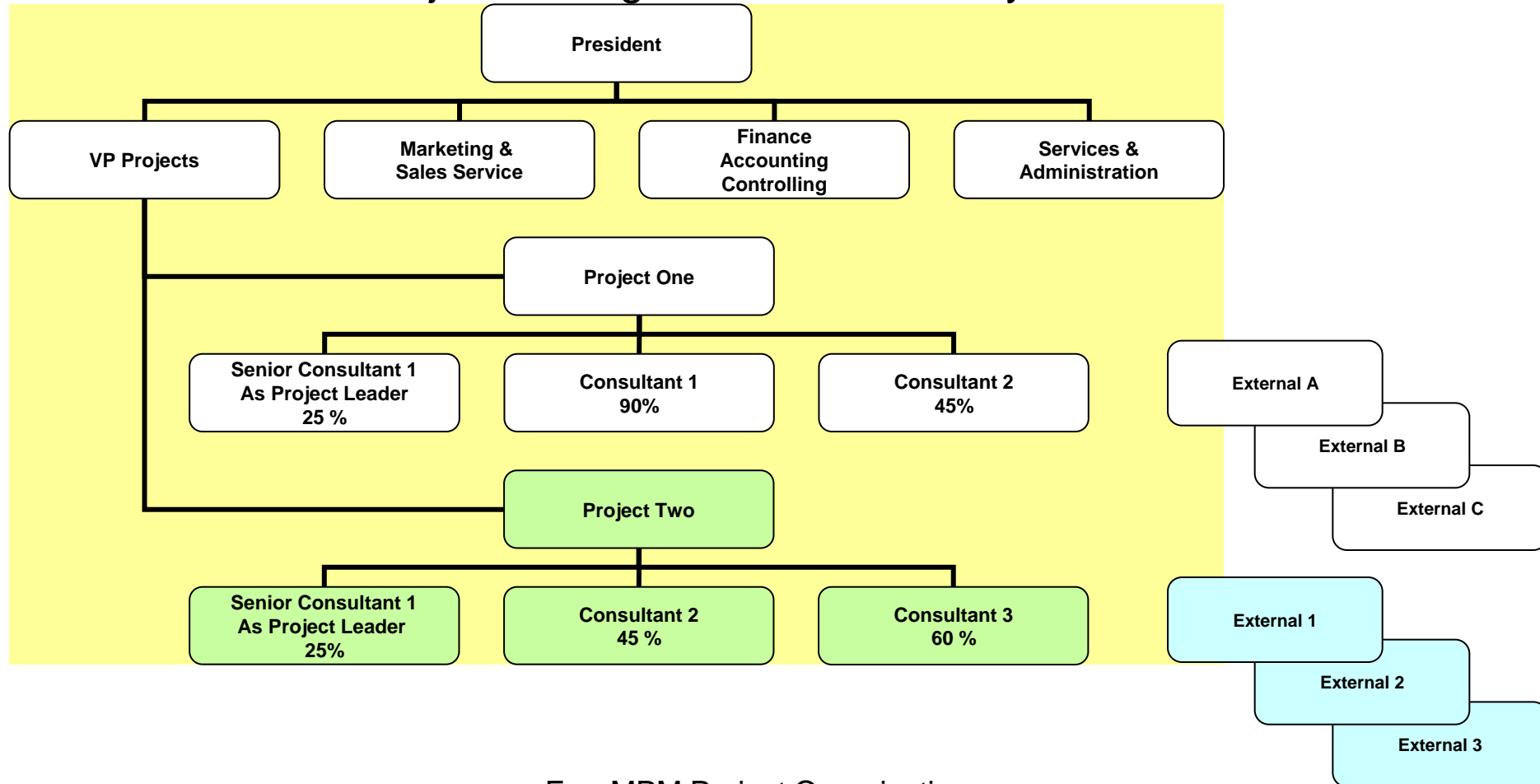


# A Small Consulting Company



# A Small Consulting Company

Project manager has line authority over team members



# Company ABC – Partially Projectized Structure

Project manager has line authority over team members

